


a handy DP guide  
to

# COMMUNITY OUTREACH PROGRAM

## WHAT IS IT ?

Community Outreach is a unique program created by Developmental Pathways to assist individuals with developmental disabilities/delays and their families who are waiting for state or federally funded services.

 We help with costs that are beyond those normally experienced by other families.

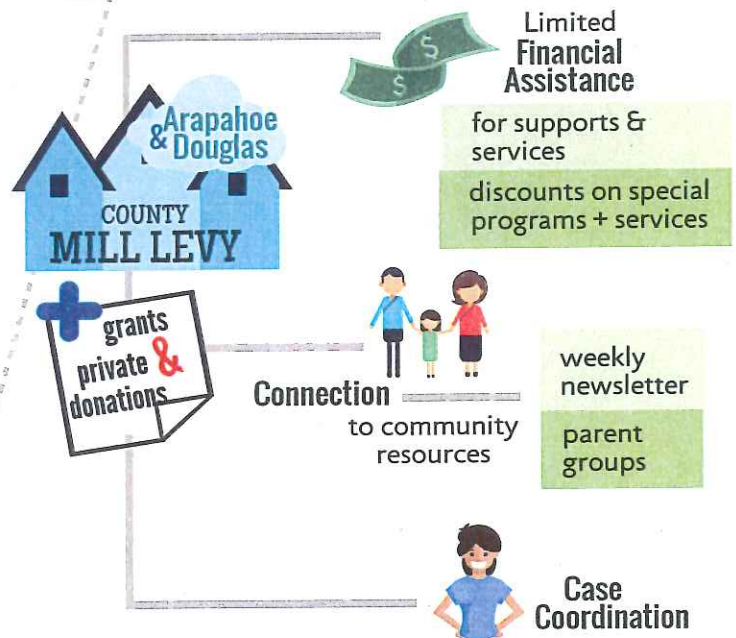
The primary purpose of Community Outreach is to support individuals by connecting them with community resources and providing funding for unmet needs.

## DOES MY FAMILY QUALIFY?

To be eligible for this program you must check these boxes:

- ✓ Live in Arapahoe County *or* Douglas County *or* the City of Aurora
- ✓ Have a family member living in your home who has a developmental disability or delay
- ✓ *Not* receive any Medicaid Waiver services from Developmental Pathways

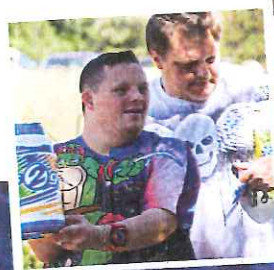
## HOW CAN IT BENEFIT ME?



## HOW DO WE APPLY?

**Yes!**

Call our Community Line:  
303-858-2255







**The Community  
Outreach Department  
supports families  
transitioning out of  
Early Intervention Services**

**Benefits for families include:**

- Enrollment into the Community Outreach Program
- Individualized case coordination
- Connection to resources
- Events and activities
- Respite opportunities
- Parent groups and educational offerings
- Assistance with navigating systems
- Online parent community

**To learn more, call the  
Community Line or email us**

**[communityoutreach@dpcolo.org](mailto:communityoutreach@dpcolo.org)**

**303-858-2255**



**Aiming to increase access to services  
& supports for children ages 3-5**